

BI ExacuTrack



You'll Know When and Where

Approximately seven out of ten offenders are not behind bars, but reside within our neighborhoods. To maintain public safety, criminal justice professionals require efficient and reliable ways to monitor and track offenders released into the community.

BI ExacuTrack enhances BI Incorporated's industry-leading radio frequency monitoring system with GPS tracking and sophisticated online case management to provide reliable, efficient, and comprehensive offender monitoring. In addition to detecting the absence or presence of an offender at home, GPS tracking records the offender's location away from home.

Enhanced Technology

As with radio frequency monitoring, BI ExacuTrack uses a receiver, which is located in a base station, and transmitter worn by the offender to detect the presence and absence of an offender at his or her residence. Unlike traditional radio frequency monitoring, BI ExacuTrack uses a tracking unit to record the location of the offender while the offender is away from home.

Advanced GPS Tracking

At just 9 ounces and as small as a PDA, the ExacuTrack tracking unit is one of the smallest and lightest units on the market. But don't let the small size fool you. With a 20-hour field-replaceable battery, omni-directional antenna, and unsurpassed GPS reception, it is the most advanced, dependable, and secure tracking unit available.

Offenders clip the tracking unit to a waistband or purse while away from home. The transmitter serves as an electronic tether to the tracking unit. If the two devices are separated, the tracking unit generates an alert and can be configured to sound an alarm.

The ExacuTrack tracking unit receives signals from the U.S. Government's GPS (Global Positioning System), and uses those signals to determine its own location every one-to-ten minutes, depending on agency specifications, to within 10 meters. The tracking unit uploads tracking data to the central monitoring computer when the offender returns home and places the unit in a base station.

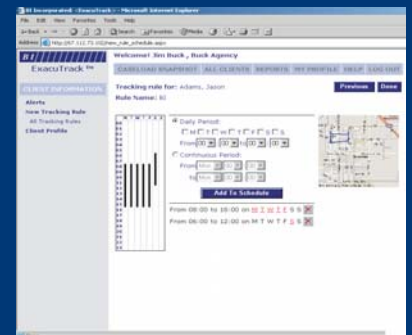
Restricting and Tracking Movement

Community corrections officers can easily track offender compliance with restricted locations using ExacuTrack exclusion zones. An exclusion zone is an area that the offender may not enter at any time. For example, a offender may be required to stay at least one mile away from a victim's home.

An inclusion zone is an area in which a offender must remain during specified times. For example, the offender may be required to go to work between 9:00 and 17:00; if the offender leaves work early, it results in an inclusion zone violation. ExacuTrack uses inclusion zones for home monitoring as well (in conjunction with radio frequency monitoring), requiring the offender to remain at home during sanction-specified times.



BI ExacuTrack enhances BI's proven radio frequency monitoring with the most advanced tracking system available.



The BI ExacuTrack monitoring system was designed specifically for community corrections officers, making it easy to learn and use.



Visual maps and mapping tools allow officers to quickly create inclusion and exclusion zones, as well as easily view tracking and GPS data.



**Alert & Responsive
Proven Solutions
Innovative Technology
Community Safety**



When at home, the offender places the tracking unit into the base station to recharge its batteries and to upload tracking data logged during the day, including GPS data, to the central monitoring computer using the offender's home phone line. The central monitoring system compares the location data to the client's authorized schedules and locations to detect violations. In the event of a violation, the system can be configured to send an alert to the officer.

Reliable and Flexible Home Monitoring

While the tracking unit is docked, the base station becomes a radio frequency receiver for the offender's transmitter, providing the same reliable and flexible home monitoring that BI's products are known for. For example, the range setting is variable at 35, 75, or 150 feet. Designed for quality and consistency, the base station includes two internal antenna to maximize reception, a 24-hour backup battery, an in-line transformer to eliminate accidental power disconnects, and a variable leave window.

In addition, the HomeGuard® 200 transmitter that is used with BI ExacuTrack is proven in the field; it has effectively monitored over 4 million offenders. Designed to be reliable and easy to use, the transmitter includes two internal antenna to minimize interference, a field-replaceable battery with a field life of one-year, and dual-tamper detection.

Easy-to-Use Monitoring Software

Designed specifically for community corrections officers, the ExacuTrack web-based case management system is easy to learn and use. This is one of the truly unique features of the ExacuTrack GPS tracking system. Offender information is stored in a central, secured monitoring system and available to officers by any computer with Internet access and Internet Explorer 5.5 or higher. This provides 24/7 access to real-time offender data and allows officers to quickly and easily view their entire caseload at a glance, enroll offenders, set offender schedules, create inclusion and exclusion zones, customize alert notification and alert escalation procedures, and close alerts. The system also supports varying user-levels and settings for agencies and officers.

BI ExacuTrack uses one of the industry-leading mapping technologies, Microsoft® MapPoint®, to provide visual maps for creating inclusion and exclusion zones. Officers simply use the computer mouse to draw points on a map screen and create zones. Zones can be any shape and size and are color coded when creating and viewing within reports. Officers can define unlimited zones and schedules per offender.

BI ExacuTrack: Reliable and Easy

BI understands and respects the enormous responsibility of agencies managing community corrections programs. To help these agencies uphold public safety and maintain trust in community corrections programs, BI is continually improving and expanding our community corrections technologies.

BI ExacuTrack is the latest addition to BI's suite of community-based sanctions. With many tracking products available to corrections professionals, BI ExacuTrack stands out for its reliability and usability. No other tracking product offers the comprehensive set of features and benefits that ExacuTrack provides. No other product provides monitoring that was specifically designed with community corrections officers in mind, so no other tracking system is as easy to use.

For more information about BI ExacuTrack call 800-701-5171. For information about other BI products and services, call 800-701-5171 or visit www.bi.com.

KEY FEATURES

Transmitter

- Dual internal antenna
- Field-replaceable battery
- 12-month battery
- Dual tamper detection

Tracking Unit

- Weighs only 9 ounces
- Small: 3.5" x 5" x 1.25"
- 20-hour battery life between charges
- Field-replaceable battery
- Omni-directional antenna

Base Station

- Two internal antennas
- 24-hour backup battery
- Variable leave window

Online Monitoring

- Designed specifically for community corrections officers
- 24/7 Online access
- Easy to learn and use
- View agency and officer caseloads at a glance
- Visual mapping tools
- Adjustable user-levels
- Unlimited zones and schedules per offender
- Customizable alert notification and escalation methods

Compatibility

- BI Drive-BI®



6400 Lookout Road, Boulder, CO 80301
800.701.5171 303.218.1000
Fax 303.218.1250 www.bi.com

BI builds and operates an integrated suite of re-entry services and technology-based monitoring solutions. We are focused on helping corrections agencies break the cycle of recidivism and improve community public safety.



Scope: The design, production, installation and support of EM services and products in the Boulder, CO and Anderson, IN facilities.